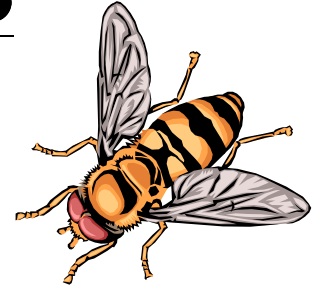




# **AP BUZZ WORDS**



## **Words/Phrases:**

- Rate
- Concentration gradient
- Dynamic equilibrium
- Optimum range
- Denaturation
- Control group/Independent & Dependent Variable/Constants
- Large Population sample
- Receptor
- Surface area
- Chemiosmosis
- Habitat/Niche
- Homeostasis
- Random mutation/ Variation within a species
- Competition for limited resources
- Wild type
- Dormancy and Desiccation
- Oxidation-Reduction
- Competent
- Aseptic technique
- Kinetic energy
- Induced fit
- Active site

## **Prefixes/Suffixes:**

- Homo – same
- Hetero – different
- Uni/Mono – one
- Bi/Di – two
- Epi - above
- Hypo – below level
- Hyper – above level
- “OSE” – sugar
- “ASE” - enzyme



## **Enzymes to remember:**

- ATP synthase
- Catalase
- DNA ligase
- DNA polymerase
- Reverse transcriptase
- RNA polymerase
- Protease
- Integrase
- Helicase