

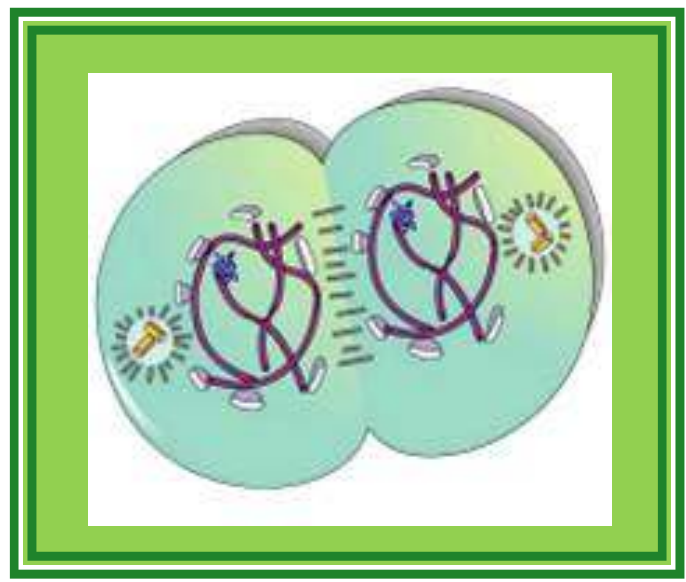
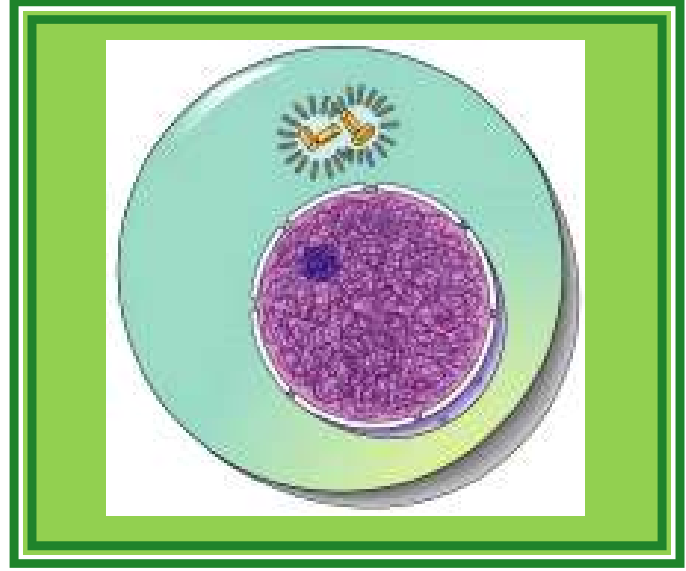
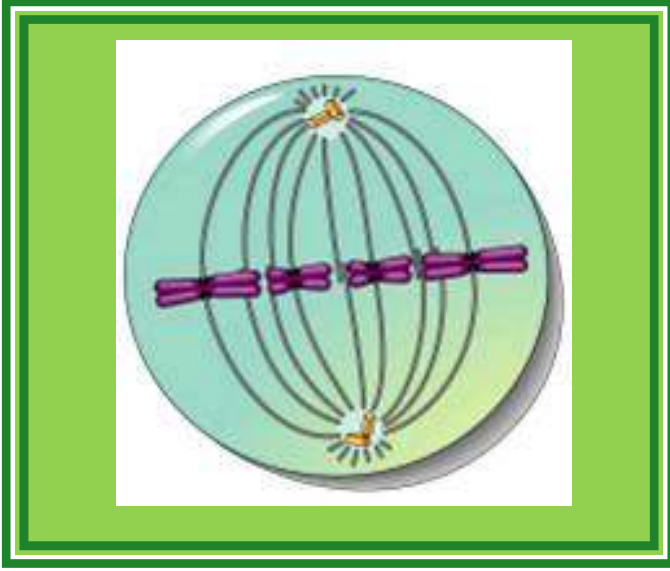
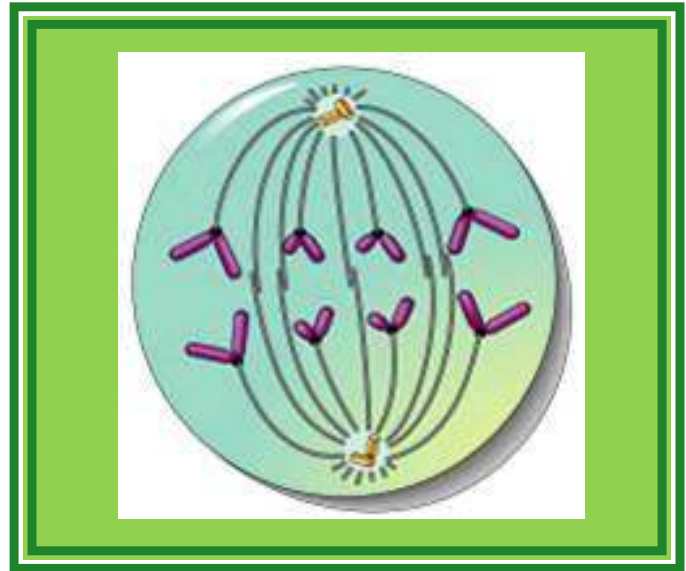
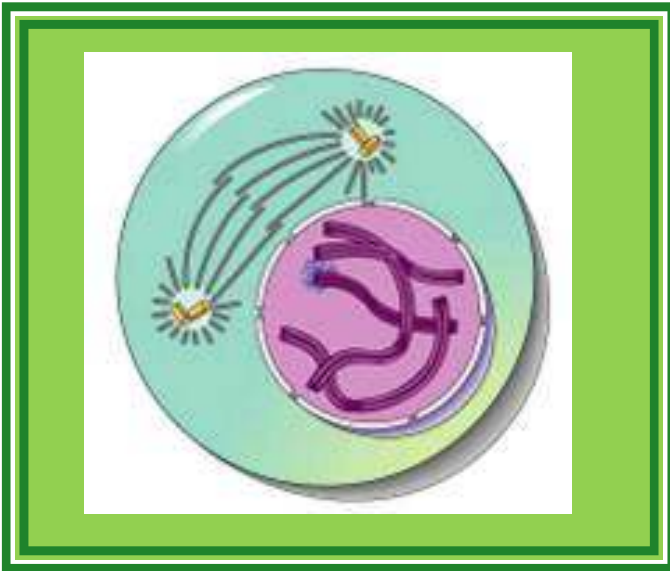
Prophase

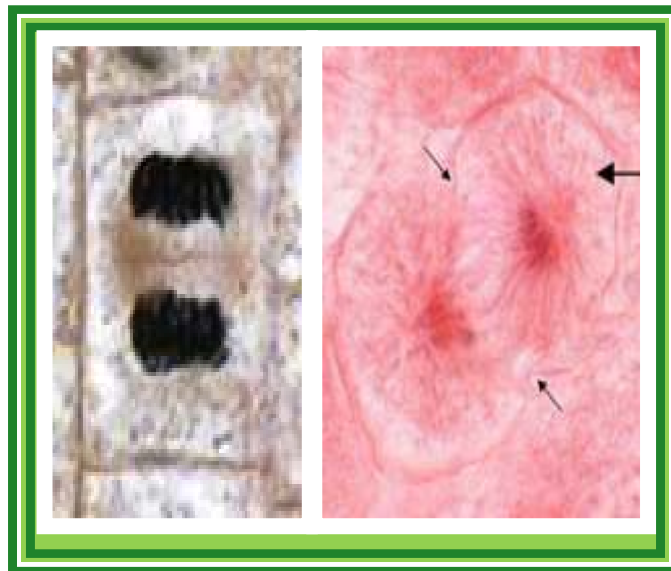
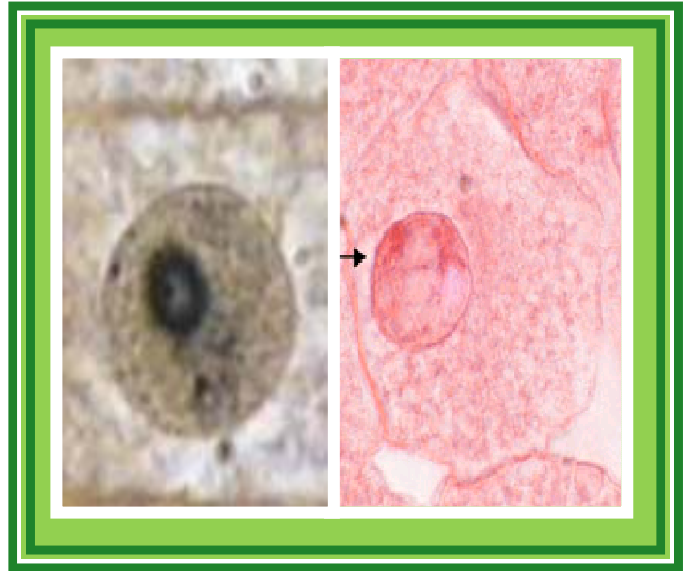
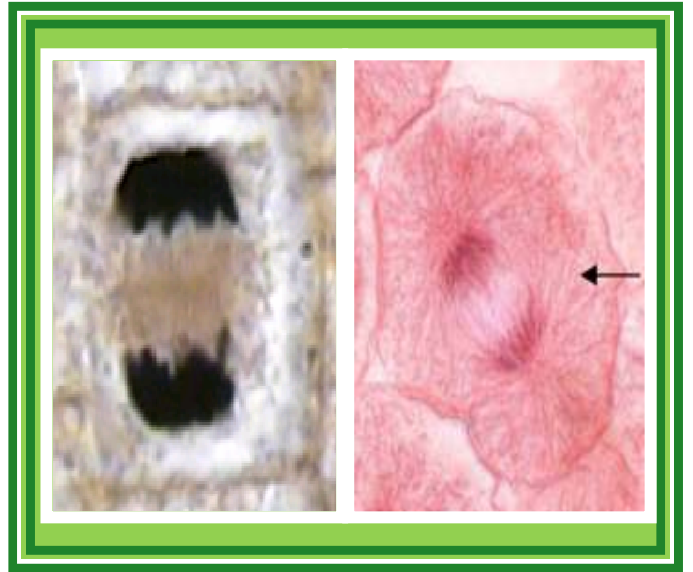
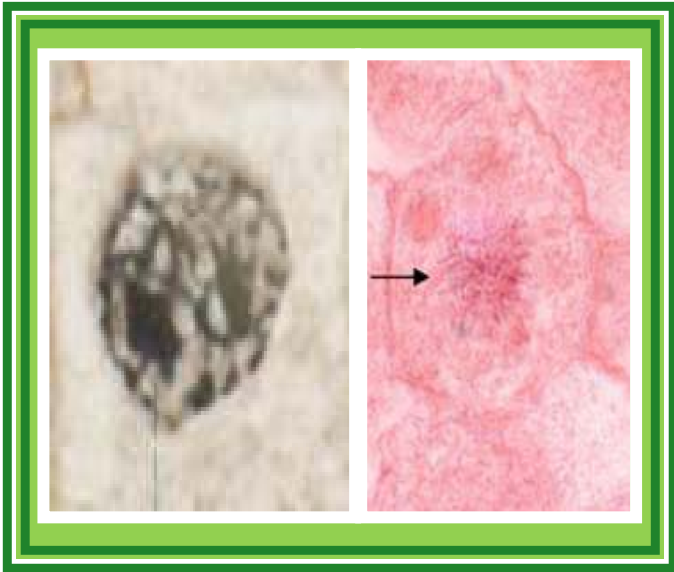
Anaphase

Metaphase

Interphase

Telophase





Chromosomes become visible.

Nuclear membrane dissolves.

In animal cells, paired **centrioles** move to opposite ends of the cell. As the centrioles move apart the **mitotic spindle fibers** form.

Sister chromatids separate from each other.

The sister chromatids are pulled by the spindle fibers to the **opposite poles** of the cell.

Duplicated chromosomes line up at the equator of the cell (**metaphase plate**).

Spindle fibers connect to **centromeres** of chromosomes.

Cell is preparing to divide by making necessary materials.

Chromosomes make copies of themselves - **DNA replication** occurs.

Spindles are broken down.

Animal Cell: pinched on the equator as the **cleavage furrow** forms at the metaphase plate.

Plant Cell: **cell plate** forms.