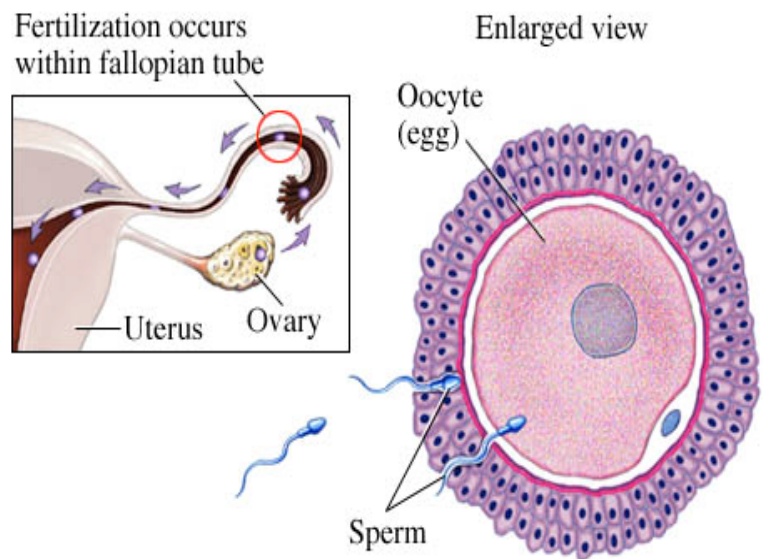


Chapter 52: The Reproductive System

- **Amniotic eggs**
- **Asexual reproduction**
- **Budding**
- **Corpus luteum**
- **Egg**
- **Estrous cycle**
- **Estrus**
- **External fertilization**
- **Fallopian tubes**
- **Fission**
- **Follicle-stimulating hormone (FSH)**
- **Follicular phase**
- **Gamete**
- **Gonad**
- **Hermaphroditism**
- **Human chorionic gonadotropin (hCG)**
- **Internal fertilization**
- **Luteal phase**
- **Luteinizing hormone (LH)**
- **Marsupial**
- **Menstrual cycle**
- **Menstruation**
- **Monotreme**
- **Ovary**
- **Oviparity**
- **Ovoviviparity**
- **Ovulation**
- **Parthenogenesis**
- **Placental mammal**
- **Polar body**
- **Primary/Secondary oocyte**
- **Progesterone**
- **Proliferative phase**
- **Protogyny**
- **Protandry**
- **Sperm**
- **SRY gene**
- **Testis**
- **Testosterone**
- **Viviparity**
- **Zygote**



Chapter 53: Animal Development

- Allantois
- Amnion
- Amniotic membrane
- Animal pole
- Archenteron
- Blastomere
- Blastula
- Blastocoel
- Blastocyst
- Blastopore
- Cell determination
- Chorion
- Cleavage
- Coelom
- Dorsal nerve cord
- Ectoderm
- Endoderm
- Extraembryonic membrane
- Fertilization
- Gastrulation
- Germ layers
- Germ line
- Holoblastic (Complete) cleavage
- Implantation
- Induction
- Inner cell mass (ICM)
- Invaginate
- Involute
- Meroblastic (Incomplete) cleavage
- Mesoderm
- Morphogenesis
- Morphogens
- Neural crest
- Neural groove
- Neural plate
- Neural tube
- Neurulation
- Notochord
- Organogenesis
- Placenta
- Primary/Secondary inductions
- Spemann organizer
- Vegetal pole
- Yolk plug
- Yolk sac
- Zona pellucida

