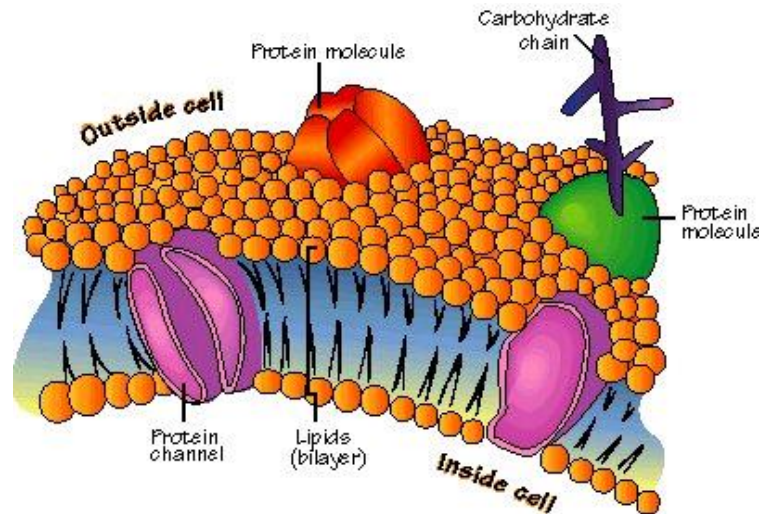


Chapter 5: MEMBRANES

- **Active transport**
- **Aqueous solution**
- **Carrier (membrane)**
- **Channel (membrane)**
- **Chemiosmosis**
- **Clathrin**
- **Concentration gradient**
- **Cotransport**
- **Countertransport**
- **Diffusion**
- **Endocytosis**
- **Exocytosis**
- **Facilitated diffusion**
- **Fluid-mosaic model**
- **Fluid-phase endocytosis**
- **Hydrostatic pressure**
- **Hyperosmotic**
- **Hypoosmotic**
- **Ion channel**
- **Isosmotic**
- **Lipid bilayer**
- **Osmosis**
- **Osmotic concentration**
- **Osmotic pressure**
- **Phagocytosis**
- **Phospholipid**
- **Pinocytosis**
- **Plasma membrane**
- **Proton pump**
- **Receptor-mediated endocytosis**
- **Selective permeability**
- **Sodium-potassium pump**
- **Solute**
- **Solvent**
- **Transmembrane protein**
- **Turgor pressure**



Chapter 9: CELL COMMUNICATION

- Adenyl cyclase
- Anchoring junction
- Autocrine signal
- Calcium
- Calmodulin
- cAMP
- Cell surface receptor
- Cell junction
- Chemical synapse
- Communicating junction
- Endocrine signal
- G protein
- Hormone
- Intracellular receptor
- Ion channel
- Ligand
- Neurotransmitter
- Nitric oxide
- Paracrine signal
- Protein kinase
- Receptor proteins
- Second messenger
- Tight junction

