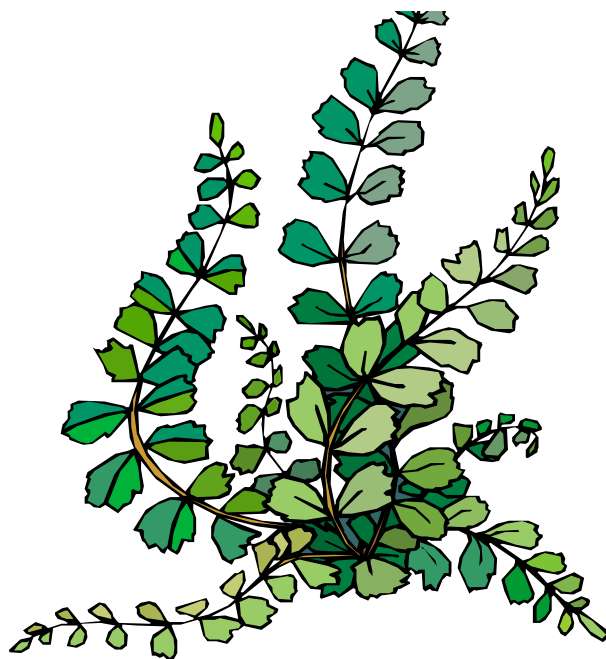


Chapter 30: OVERVIEW OF GREEN PLANTS

- **Alternation of generations**
- **Angiosperms**
- **Bryophytes**
(Liverworts, hornworts, mosses)
- **Charophytes**
- **Chlorophytes**
(*Chlamydomonas*, *Volvox*, *Ulva*)
- **Cuticle**
- **Desiccation**
- **Dioecious**
- **Diplontic**
- **Frond**
- **Gametangium** (*pl.* gametangia)
- **Gametophyte**
- **Gymnosperms**
(Conifers, Cycads, Ginkgophytes, Gnetophytes)
- **Gynoecium** (carpels: ovary/fruit, stigma, style)
- **Haplodiplontic**
- **Heterosporous**
- **Homosporous**
- **Mycorrhizal associations**
- **Nectar**
- **Ovule**
- **Petals**
- **Pistil**
- **Pollen grains**
- **Pollen tube**
- **Plasmodesmata**
- **Rhizoids**
- **Seeds**
- **Seed coat**
- **Sepals**
- **Sorus** (*pl.* sori)
- **Sporangium** (*pl.* sporangia)
- **Spores**
- **Sporophyte**
- **Stamens** (anther, filament, androecium)
- **Stoma** (*pl.* stomata)
- **Streptophytes**
- **Tracheids**
- **Tracheophytes**
(Club mosses, ferns, seed plants)
- **Vascular tissues** (Xylem / Phloem)
- **Vessels**
- **Viridiplantae**
- **Whorls**



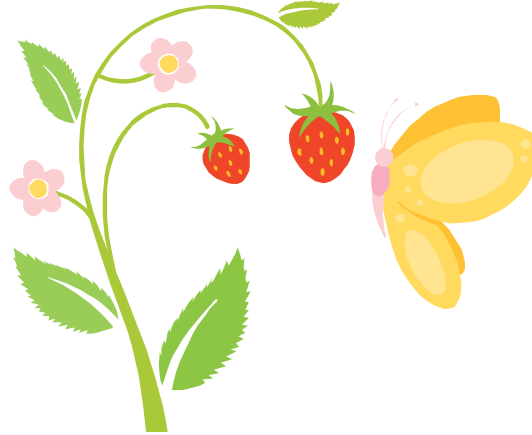
Chapter 36: THE PLANT BODY



- Adventitious root
- Aerial roots
- Apex (*pl.* apices)
- Axillary bud
- Blade
- Bulbs
- Bracts (floral leaves)
- Buttress roots
- **Casparian strips**
- Chlorenchyma
- Cladophylls
- **Collenchyma cells**
- **Companion cell**
- Compound leaves
- Contractile roots
- Cork cambium
- Corms
- **Cuticle**
- Dermal tissue
- Dicot
- Endodermis
- **Epidermis**
- Fibers
- Food storage roots
- Ground tissue
- **Guard cells**
- Insectivorous leaves
- Intercalary meristems
- Internode
- Leaf primordium (*pl.* primordia)
- Leaflets
- Lenticels
- Lignin
- **Meristems** (apical, lateral)
- Mesophyll
- Monocot
- Node
- Outer bark
- Parasitic roots
- **Parenchyma cells**
- Pericycle
- Petiole
- Pits
- Pith
- **Plasmodesmata**
- Pneumatophores
- Primary plant body
- Primary tissues
- Prop roots
- Reproductive leaves
- Root cap
- **Root hairs**
- Root system
- Sclereids
- **Sclerenchyma cells**
- Secondary growth
- Secondary plant body
- Secondary tissues
- Shade leaves
- Shoot system
- **Sieve cell**
- Sieve plate
- Sieve tube
- Simple leaves
- Spines
- Stele
- **Stoma (stomata)**
- Tendrils
- **Tracheids**
- **Transpiration**
- Trichomes
- Tubers
- Vascular cambium
- **Vascular tissues (Xylem / Phloem)**
- **Vessels**
- Water storage roots
- Window leaves
- Zone of cell division
- Zone of elongation
- Zone of maturation

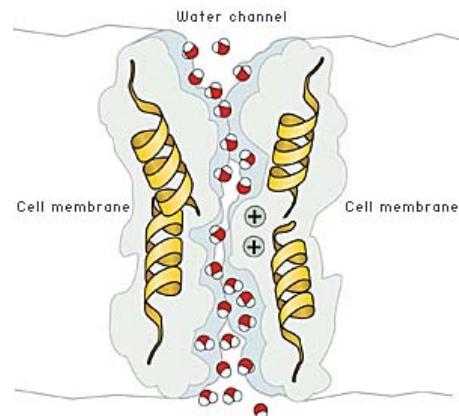
Chapter 37: VEGETATIVE PLANT DEVELOPMENT

- Amyloplasts
- Cotyledons
- Embryo
- Endosperm
- Fruits
- Germination
- Ground meristem
- Megagametophyte
- Morphogenesis
- Pericarp
- Primary meristems
- Procambium
- Protoderm
- Radicle
- Seed bank
- Seed coat
- Stratified
- Zygote



Chapter 38: TRANSPORT in PLANTS

- Aerenchyma
- Apoplast route
- Aquaporins
- Cavitation
- Guttation
- Halophytes
- Megapascals (MPa)
- Osmosis
- Phloem loading
- Pressure-flow hypothesis
- Pressure potential (Ψ_p)
- Root pressure
- Sink
- Solute potential (Ψ_s)
- Source
- Symplast route
- Tensile strength
- Translocation
- Transmembrane route
- Transpiration
- Water potential (Ψ)



Chapter 39: PLANT NUTRITION and SOILS

- Food security
- Humus
- Hydroponics
- Legumes
- Macronutrients
- Micronutrients
- Nitrogen-fixing nodules (*Rhizobium*)
- Phytoremediation
- Topsoil



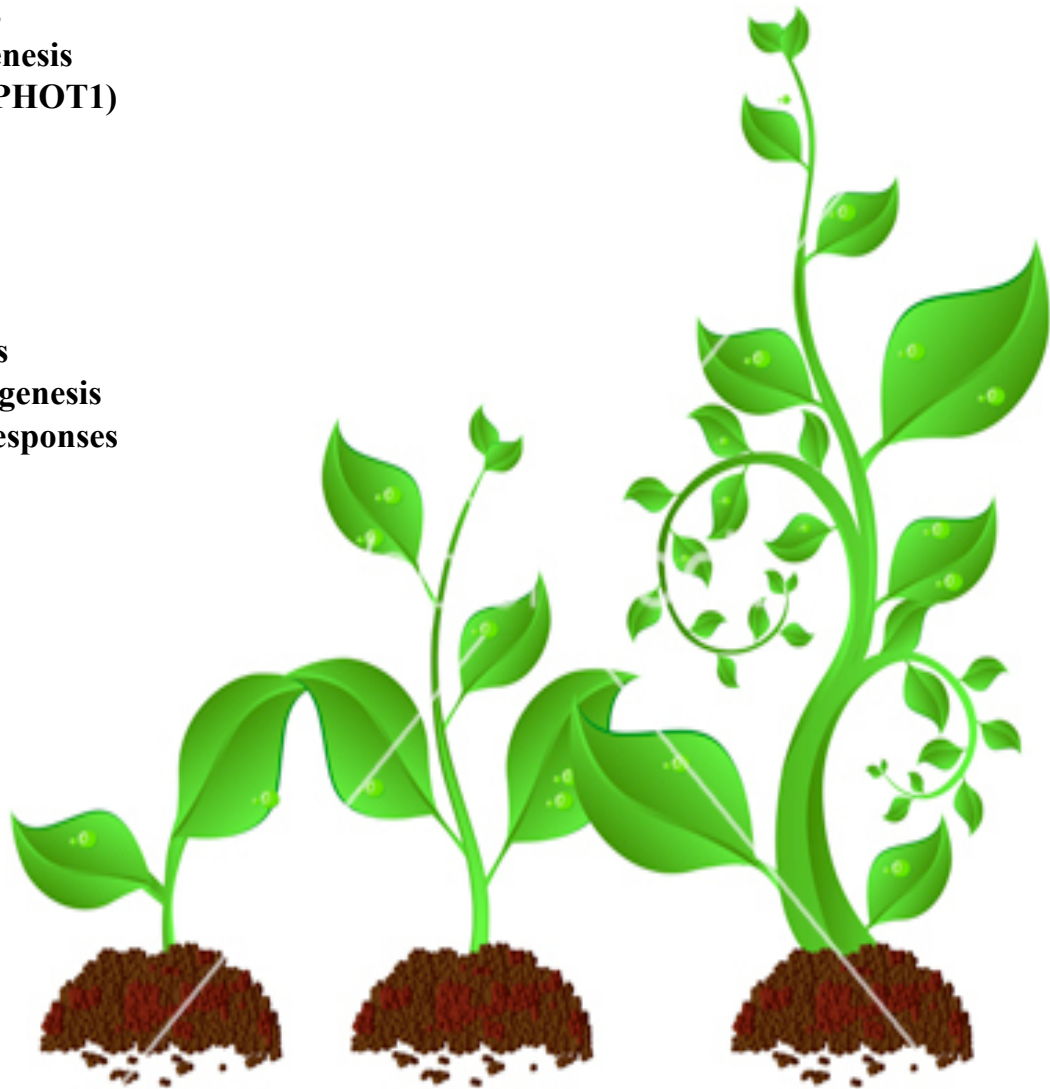
Chapter 40: PLANT DEFENSE RESPONSES

- Allelopathy
- Avirulent pathogen
- **Cutin**
- Gene-for-Gene Hypothesis
- Hypersensitive response (HR)
- **Mutualism**
- Phytoalexins
- Phytoestrogens
- Quinine
- **Rhizobacteria**
- **Secondary metabolites**
- Suberin
- Systemic acquired resistance (SAR)
- Taxol
- **Wound response** (systemin, jasmonic acid, salicylic acid, proteinase inhibitors)



Chapter 41: SENSORY SYSTEMS in PLANTS

- **Abscisic acid**
- **Abscission**
- **Acid growth hypothesis**
- **Amyloplasts**
- **Auxins (Ex) Indoleacetic acid (IAA)**
- **Brassinosteroids**
- **Circadian rhythms**
- **Cytokinins**
- **Etiolation**
- **Ethylene**
- **Gibberellins**
- **Gravitropism**
- **Heat shock proteins (HSPs)**
- **Oligosaccharins**
- **Photomorphogenesis**
- **Phototropin 1 (PHOT1)**
- **Phototropisms**
- **Phytochrome**
- **Proteasome**
- **Seed dormancy**
- **Supercooling**
- **Synthetic auxins**
- **Thigmomorphogenesis**
- **Thigmonastic responses**
- **Thigmotropism**
- **Tropism**



Chapter 42: PLANT REPRODUCTION

- ABC model
- Adventitious plantlets
- Alternation of generations
- Annual plants
- Apomixis
- Biennial plants
- Calyx
- Complete flower
- Corolla
- Dichogamous
- Dioecious
- Double fertilization
- Embryo sac
- Endosperm
- Floral meristem identity genes
- Floral organ identity genes
- Gynoecium
(Carpels: ovary/fruit, stigma, style, ovules/seeds)
- Incomplete flower
- Monoecious
- Morphogenesis
- Perennial plants
- Phase change
- Photoperiodic flowering pathway
(Short-day, Long-day, Obligate long/short day, Facultative long/short-day)
- Pollen grains
- Pollen tube
- Pollination
- Pollinators
- Rhizomes
- Runners (stolons)
- Self-incompatibility
- Sepals
- Stamens (anther, filament, androecium)
- Suckers
- Vegetative reproduction
- Vernalization

